

Introduction

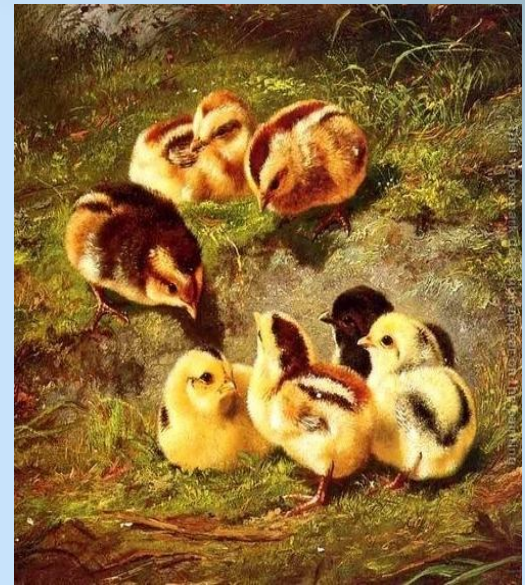
Egg needs a stable temperature, so:

The heat should be transferred from the chest skin

Blood flow should be regulated

TRP channels are temperature receptors

morphological changes in the brood patch skin?
Are TRP channels up regulated during the incubation?

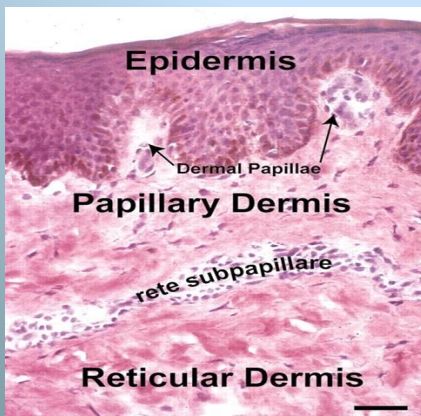


Although considerable morphological changes in the skin of broodpatch could be seen the tested thermoTRP channel's expression did not show significant change



Are TRP channels so specific to some parts of skin?

Is TRP channels' regulation only in the early stages of incubation?



Results

More vessels

broody hens brood patch skin compared to back skin (inter scapular) and brood patch skin of non incubating hens had

Thicker epidermis

Larger vessels

No TRPV4 mRNA
No TRPM8 in qPCR
No change in TRPV1 & V3 expression in qPCR!

V4, a mystery!